

Indiana Pinto Horse Association

Banner

May/June 2010

web site www.indianapinto.com

Bit-By-Bit Farm

Introducing our newest stars



Sonnys Dazzle Girl

Owned & shown by: Vanessa Davidsen

Trained, Fitted and shown by: Jack Brush



Zippin Jackie Bar

Owned & Shown in open class by: Jack Brush

Shown in Amateur by: Vanessa Davidsen

We also welcome back for 2010 our veterans:

Zippin Pine

Owned by: Patsy Detamore.

Shown by: Patsy Detamore

And Jack Brush

2009 IPtHA Sr. Horse Champion

IM A Shady Lady

Owned by: Patsy Detamore

Shown by: Patsy Detamore

and Jack Brush

2009 World Show High Point
Pony

Bit-By-Bit Farms: Bit-By-Bit Farm. Inc is celebration 32 years in 2010. Jack Brush, Owner and trainer continues with his long dedication to providing top quality Western Pleasure, Showmanship, Horsemanship, Trail, Halter and Fitting to the Pinto show world. Jack has produced numerous local, state and world champions over the years. He also has more than 25 years experience in judging a variety of breeds and 4-H. Bit-By-Bit Farm is located in Uniondale, IN.

Bit-By-Bit Farm is very excited to introduce our newest stars for 2010;

Sonnys Dazzle Girl: Owned and shown by Vanessa Davidsen and trained by Jack Brush. "Dottie" is a 2 year old and will be competing in Halter and Showmanship with Vanessa.

Zippin Jackie Bar: Owned by Jack Brush who will be showing her in Open classes as a Jr. Horse and by Vanessa Davidsen in Amateur classes. Our fine class of veterans is also returning for 2010:

Zippin Pine: Owned by Patsy Detamore, MD who will be showing him in Amateur classes and Jack Brush who will be showing him in the Open classes for Sr. Horse.

IM A Shady Lady: Owned by Patsy Detamore who will be showing her in Amateur classes and by Jack Brush who will be showing her in Open classes.

Visit us on line at jackbrush@verizon.net

OR

Jack Brush
(260)-760-8669
8058 N. Meridian Road
Uniondale, IN

Come out and see our farm and join the fun!



A Word from the President

Hello everyone, well the first show is done and I would like to thank you all for a great job. This show was at a new location but we had a great turn out and wonderful weather which always helps.

It is time to move on to the Eastern Central Jubilee which is August 7th & 8th 2010. We will need all of our club members to help at this show as we are the host club. I know that we all show, but if you have any free time please see the show office or me. We will find some way for you to help. I hope to see you all in August and September. Good luck to all of our IPtHA members who are at the World Show.

Your President

Jim Yagel

Great News from the Pinto World Show

Grace Ingle & Smart Little Lucy have won a total of 6 World Championship and 5 Reserve World Championship awards at the 2010 Pinto World Show in the YA Pony Division:

Good job Grace and Lucy

Kimberly Gear Has Won a Reserve in JR Am Disciplined Rail Western.

Check the Indiana Pinto web site and the next issue of the Banner for a complete List of World Show Placings.

Please forward your World Show News to Joe Grissom.

More Great News

IPtHA's VERY OWN CHELYSIE VANDEVER IS THE 1ST
RUNNER-UP IN THE 2010 MISS PINTO OF AMERICA
CONTEST. OUTSTANDING JOB CHELYSIE ~ WAY TO GO

!!!

2010 Indiana Pinto Officers:

President – Jim Yagel	1-260-723-5362	
1 st Vice President – Annette Pitcher	1-317-862-3142	annette@goldernroyal.com
2 nd Vice President- Milly Drinski	1-219-776-0353	
Secretary – Deb Hilbert	1-260-244-2633	deb.hilbert@embarqmail.com
Treasure – Bobbieann Lawrence	1-260-244-3997	
Director At Large – Caroline Miller	1-317-513-2437	camiller@anatomy.iupu.edu

Indiana Pinto Board of Directors:

3 years

Cheryl Ann Walls	1-260-623-3400	cawfwf@verizon.net
Sherrin Ann Davis	1-765-922-4616	customtile@swayzee.com
Linda Eckert	1-260-610-5502	
Caitlin Vanderohé	1-317-224-7700	cvondero@purdue.edu
Kim Ingle	1-574-784-8501	kdi86@hotmail.com
Bob Davidsen	1-517-787-5272	bob@specialteesmi.com
Alison Mendenhall	1-419-296-0635	
Jill Duzan	1-574-328-6857	countriegirl@verizon.com

1 year

Valerie Wietfeldt	1-260-799-4491	vwietfeldt03@peoplepc.com
Mike Vandever	1-317-862-6620	mvandever@indygov.org
Mel Wietfeldt	1-260-799-4491	vwietfeldt03@peoplepc.com
Wynetta Duncan	1-317-426-9224	pintoyouth@aol.com

Banner Editor: Valerie Wietfeldt 1-260-799-4491 vwietfeldt03@peoplepc.com

Web Site Manager: Joe Grissom 1-765-242-4644 joe1056grissom@yahoo.com

2010 IPtHA Committee Leaders

Hoosier Horse Fair Booth

Stallion Row.

Bobbieann Lawrence
(260)-244-3997

Royalty

Barb Vanderohé
1-317-578-2459
ericvonderohé@aol.com

Youth

Catlin Vonderohé
1-317-224-7700
cvondero@purdue.edu

Membership/Officer Nomination

Bobbieann Lawrence
(260)-244-3997

By Laws

Deb Hilbert
1-260-244-2633
deb.hilbert@embarqmail.com

Judge Recruitment/ Contract Approval

Joe Grissom
1-765-242-4644
joe1056grissom@yahoo.com

Newsletter (Banner)

Valerie Wietfeldt
1-260-799-4491
vwietfeldt03@peoplepc.com

Jubilee

Wyneta Duncan
(317)-462-9224
Pintoyouth@aol.com

Annette Pitcher
(317)-462-9224
Annette@goldenroyal.com

Joe Grissom
(765)-242-4644
joe1056grissom@yahoo.com

Website

Joe Grissom
1-765-242-4644
joe1050grissom@yahoo.com

HighPoint\Year-End Awards

Wynetta Duncan
1-317-462-9224
Pinot youth@aol.com

Banquet

Sharrin Ann Davis
1-765-922-4616
customtile@sway.com

Dolores Greenlee

Show Office

Barb & Joe Grissom
(765)-242-4644
joe1056grissom@yahoo.com

If you are interested in being a part of one of these committees, please attend one of the meetings or contact the person listed under the committee that interests you.

Become a 2010 IPtHA show sponsor

The Indiana Pinto Horse Association is accepting sponsors for the 2010 show season.

Sponsorship falls into one of four categories:

"Gold" Sponsor	\$100.00 and up
"Sliver" Sponsor	\$50.00 - \$99.99
"Bronze" Sponsor	\$25.00 - \$49.99
"Blue Ribbon" Sponsor	\$24.99 and under

Your name or company will be posted in the show office as an official Gold, Sliver, Bronze, or Blue Ribbon Sponsor: your ad will be announced at the shows and published in the newsletter as a sponsor.

This event is **A BARGAIN!!** You can advertise your training or boarding facility, your fine stallion, or place of employment or your business.

YES, I WANT TO BE A 2010 IPtHA SPONSOR.

NAME: _____

ADDRESS: _____

City, State, Zip: _____

- ☐ Gold sponsor Amount: _____
- ☐ Sliver sponsor Amount: _____
- ☐ Bronze sponsor Amount: _____
- ☐ Blue sponsor Amount: _____

- ☐ ***I need a receipt.***

Make checks payable to IPtHA and send to:

Bobbieann Lawrence
2285 E 400 S
Columbia City, IN. 46725

Become a show sponsor for 2010



GOLD RIBBON SPONSORS:

**HOLLY STANBROUGH
MIKE & KAREN VANDEVER
JOE & BARBARA GRISSOM**

\$100.00 and up



SILVER RIBBON SPONSORS:

**STEVE & DEB HILBERT
MILLY DRINSKI
NICK & BOBBIEANN LAWRENCE
LISA GAMBLIN**

\$50.00 - \$99.99



BRONZE RIBBON SPONSORS:

**CHERYL ANN WALLS
JAKE & STACEY SNYDER
PAM MACKEY
CHRIS & RAENI DUMFORD
BRENDA UPCHURCH
BRETA KOESTER**

\$25.00 – \$49.99



BLUE RIBBON SPONSORS

\$24.99 and under

Thank you for your support for IPtHA



**BIT-BY BIT
FARM
PAINT HORSES
TRAINING, LESSONS, SALES, & JUDGING
JACK BRUSH
(260) 760-8669
(260) 622- 4450
8508N. MERIDIAN RD.
UNIONDALE, INDIANA**



SPECIAL-TEES

SCREEN PRINTING AND EMBROIDERY

**"YOU NAME IT, WE PUT YOUR LOGO ON
IT"**

**Contact BOB DAVIDSEN (517) 206-1831
7203 BROOKLYN RD. NAPOLEON, MI 49261.
E-MAIL Bob@specialteesmi.com**



HORSE TALES 2010

Show News:

Well, we now have the first show under our belts! What a great show it was. We had a wonderful supper for all on Friday night. IPtHA would like to thank Jean Poyser and Vanessa Davidsen for the food and drinks and all the others who brought in cookies and other goodies for the meal. A special Thank You to Mrs. Dolores Greenlee for sending all the paper plates and silverware, cups and glasses and other things I'm sure I forgot. We sure missed both her and Don at the show. But we understand they had a good time at Don's class reunion.

The weather was outstanding, what little rain we had waited until we were done showing on Saturday. The office staff would like to thank everyone who pre entered the show or signed up on Friday night, that makes our show run so much easier and smoother on Saturday morning.

Once again we had our wonderful Jamie on the microphone doing a great job announcing the show. A little bird saw something on Jamie's hand that was very pretty. So at the next show make sure you ask her about it, if you don't already know!! We had new members that helped out. On the gate we had Sherrin Ann Davis and Friend (sorry I don't know your name) they helped Mel on Saturday then did it all on Sunday. Rex Runion was helping out in the ring on Saturday and Sunday mornings. They all did a great job! Thanks everyone for all your help!! On Sunday we had a bake sale for Queen Chelysie VanDever to help her with expenses at the WORLD SHOW. Chelysie would like thank everyone who brought something to sell and to all of you who bought something.

We would like to wish Chelysie good luck at the World Show as she is running for the title of **Miss Pinto of America**. Good Luck and have fun at the show. I am sure she will have a great time and have lots of things to tell us when she gets back.

National News:

The National Pinto Horse of America has made several changes:

1. PtHA will no longer print the Pinto Horse Magazine, except, there will be a magazine printed annually following the World Show.
2. All current PtHA members will receive a hard copy of a National Newsletter 4 times per year. All members that furnish PtHA with email addresses will continue to receive email Newsletters from PtHA.
3. There will no longer be a Queen contest held at the National level.

Club News:

In club news do to changes at the national level we will no longer have a Queen or Princess program, however Mrs. Barb Vonderohe is working on possible Scholarships for all of our youth to have a chance to compete for. The Board and Officers are awaiting more information on this and it may take a while, but until then we have dismissed our Royalty program so that we are in compliance with the National rules on this issue.

Tidbits from IPtHA:

At the Rochester show we had many people from other states come and show with us. One young man from Minnesota is running for **Pinto youth challenge of the year**. Laddie will be at the East Central Jubilee and hopefully the fall show at New Castle, Indiana. We all are wishing you the best of luck on your endeavor. Several of you answered the call for the contest class when this young man put out a call to help fill the classes so that he could get a full pointed class. Thank you so much for all of your help for this young man. We had 52 horses and 435 entries for our first show.

I would like at this time to say HI to my most loyal reader of the Banner, a woman that I have known for several years and I love dearly along with her daughter. So this is for you Margaret Runion. Thank you for reading my chatter every time the banner comes out. Take care and God Bless you.

Well ladies and gentlemen that is all I have for now. Have a safe and healthy summer see you all in August. Good luck at the 4-H Fair IPtHA youth.

Condolences

Send you condolences to the family of Jim Yagel, Alex Yagel, and Nick & Bobbieann Lawrence. Their cousin Hildreth Kiser who was a 101 years young passed way in May. When I said young I do mean young, this lovely lady was always on the go, she still lived alone and drove. I hope that most of you got to meet her at the spring show at Rochester. She and Alex went on a ride with Little Bit proudly running them all over the fair grounds. Both of them were having the time of their lives.

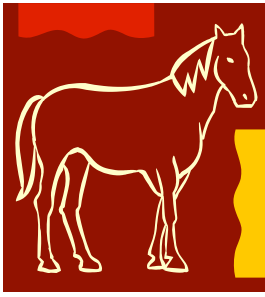
Please send you prayers and thoughts to Autumn Kinser for the loss of her grandfather and uncle. The family lost both of them on the same day. Autumn's Grandfather died in the hospital with the family by his side. That same day her uncle died in an auto accident.

Judy Will, who was a member of IPtHA long ago, lost her mother after a long illness. You can contact Bobbieann to get the address for Judy.

IN LOVING MEMORY of Hildreth Kiser



Here is Alex and Hildreth at the May show. As you can see they are both having the time of their lives! I know that she touched many lives in her 101 years. Enjoy the memories and fun times. God Bless



K & H PERFORMANCE HORSES & MINIATURES

***STANDING MINIATURES:**

One Smokin Lil RedHot AMHA\PtHA

Ohman Whata Deal PtHA

One Smokin Lil Hotrod PtHA

***STANDING AQHA STALLION**

Poco Dun Gone Gray

**WE OFFER TRAINING, SHOWING, AND
FITTINGS. CALL US TODAY AT (812)521-6207
OR (812)525-7246 FOR ALL YOUR BREEDING
AND TRAINING NEEDS.**

Call Pam today for all your horse needs.

Nutrena Feed
Pet Food
Livestock Feed
Horse Feed

Horse Boarding
Riding Lessons
Indoor Arena

Nutrena®
McCammon Farms, Inc.

Owners:
Mike and Pam Mackey
3365 East 400 North
Hartford City, IN 47348

Home: (765) 348-3409
Cell: (765) 348-8445

INDIANA PINTO HORSE ASSOCIATION
April 25TH , 2010

The meeting was called to order at 1:02 pm by President Jim Yagel at the Kokomo Pizza Hut. In attendance were: Annette Pitcher, Deb Hilbert, Bobbieann Lawrence, Sherrin Ann Davis, Linda Eckert, Caitlin Vonderohe, Alison Mendenhall, Valarie and Mel Wietfeldt, Mike VanDever and Wyneta Duncan.

MINUTES: For March and April were read by Deb Hilbert and approved by Annette Pitcher and 2nd by Mel Wietfeldt.

Minute Approval

February minutes were read by Deb Hilbert, motion by Annette and 2nd by Valerie to approve the minutes. March minutes were read by Deb Hilbert, motion by Annette and 2nd by Mel to approve the minutes. Vote was taken and approved.

Treasurer's Report: Was read by Bobbieann Lawrence, approved by Valerie Wietfeldt and 2nd by Annette Pitcher.

Show Committee:

*The following report was provided by Joe Grissom, all back numbers that were not reserved for 2010 are now available.

*The spring show pattern book is now posted on Indiana Pinto web site. The Hunter G&R that was not posted on the last show bill has been corrected.

*To nominate for Indiana Pinto year-end awards, need to be done prior to your first class, all fees and forms must be turned in before points start counting. Points will not be counted retroactive.

*Pinto registration will be available at the show, you may purchase any National service (membership, Am, Nov, etc.) at the show, with the exception that you can not execute a lease or a transfer at the show.

Hoosier Horse Fair Committee:

*Report given by Bobbieann Lawrence, Hoosier Horse Fair was a great success!

*A down payment for the Hoosier Horse Fair booth for 2011 has been made.

* Motion by Wyneta Duncan that any member who pays their membership prior to Hoosier Horse Fair, and comes to the HHF, will be eligible for the prize drawing, 2nd by Valerie Wietfeldt vote taken and approved.

Queen Committee:

*The following report was provided by Barbara Vonderohe, the National office has announced this will be the last year for the queen contest.

*Motion by Annette Pitcher and 2nd by Bobbieann Lawrence to drop the Queen contest for next year, a vote was taken and approved.

*Motion by Annette Pitcher and 2nd by Wyneta Duncan to have a committee look into a possible scholarship program, a vote was taken and approved.

Youth Committee: The following report was provided by Caitlin Vonderohe.

*There will a bake sale at the spring and fall shows this year. Donations will be greatly appreciated.

*Fun classes will be held again this year.

Banquet Committee: Sherrin Ann Davis provided flyer regarding banquet.

High Point:

The following report was provided by Wyneta Duncan that she has received 21 nominations for Year-end High Point Awards.

Additional Business

A 50/50 Raffle was held at our April meeting. Congratulations to Mike VanDever. IPtHA made \$27.50.

Sector Director: Annette Pitcher gave a verbal detail of the convention.

* The Pinto Horse magazine will no longer be published as a magazine, it will become a quarterly newsletter mailed to all current PtHA members.

Next Meeting Date & Place: At the spring show sometime after the last class and before the carry-in dinner.

Meeting Adjourn: at 2:45 pm Motion by Wyneta Duncan and 2nd by Valerie Wietfeldt.

General Membership Meeting was held to discuss and vote on the Constitution & By-Laws.

The meeting was called to order at 3:00 pm by President Jim Yagel at the Kokomo Pizza Hut. In attendance were: Debra Hilbert, Jim and Alex Yagel, Bobbieann Lawrence, Alison Mendenhall, Linda Eckert, Joe and Barbara Grissom, Sherrin Ann Davis, Mel and Valerie Wietfeldt, Wyneta Duncan, Annette Pitcher, Madalyn Vonderohe, Caitlin Vonderohe, Eric and Barbara Vonderohe, Mike VanDever, Anthony Yagel and Sarah Egel.

Read by Joe Grissom, the changes to the Constitution was read and discussed. Motion by Bobbieann Lawrence and 2nd by Annette Pitcher to accept the changes, a vote was taken and approved.

The changes to the By-Laws were read. A motion by Joe Grissom and 2nd by Annette Pitcher to suspend the ruling that the By-Laws must be voted on at the next meeting and to go ahead with vote now. Vote was taken and approved.

Motion by Wyneta Duncan and 2nd by Annette Pitcher to approve the By-Laws, a vote was taken and approved.

Deb Hilbert, Secretary

It's The Season!
Now Offering

APHA & PfHA (pending)
2006 Chestnut Overo, Mare
Awesome Andy dtr



Awesome Partygirl

Fairway Farm Pintos
(260) 704-4500
cawfwf@verizon.net



News from our Queen

Hello everyone, it was very exciting showing at the new show facilities in Rochester. We seemed to have a nice turnout with quite a few people from our fellow states. Showing at Rochester really helped me get some quick practice in before the Pinto World Show.

The world show is fast approaching and I have been very busy preparing my mare Lola, and running around gathering things for my queen contest. I am very excited to be representing my club and to be able to compete for Miss Pinto of America. Some things that I will be

doing for the Queen contest is, decorating my stalls, passing out queen baskets, taking a knowledge test, and competing in EQ and Horsemanship. This is my first year to attend the World Show and this will be my first time in Tulsa. Of course I am a little nervous but still very excited.

This has been a very busy year for my reign as queen, but I have enjoyed every minute of it. It's sad that this is the last year for the National contest, but I am honored to be representing Indiana as your last queen to compete for Miss Pinto of America

Best Wishes, Chelysie VanDever

We have news from The World Show

Hello everyone Joe Grissom just called and if you would like to keep upon what's happening at the World Show just log on to our web site at indianpinto.com for update and happenings.

NEWS FLASH

Congratulations Chelysie

1st Runner-Up 2010 Miss Pinto of America

**Don't forget to get to check out Photos by Lori
If you are interested in 2009 or 2010 Indiana Pinto
Show Photos or need a Photo services contact
Lori Schmidt @<http://www.prophotobylori.net>**

**THE JUDGES ARE COMING.
THE JUDGES ARE COMING.**

THAT'S RIGHT IT'S THAT TIME OF YEAR AGAIN!

**THE FOLLOWING DATES OF THE 2010 IPTHA
SHOWS.**

**AUGUST 7 & 8 2010
EAST CENTRAL JUBILEE**

**SEPTEMBER 11 & 12
NEW CASTLE, INDIANA**

**SEE THIS ISSUE OF THE BANNER AND VISIT THE
INDIANA PINTO WEB SITE @
WWW.INDIANAPINTO.COM
FOR SHOW BILL
SHOW FORMS AND INFORMATION**

**NOTICE
IPTHA GENERAL
MEMBERSHIP MEETING 30
MINUTES AFTER LAST
CLASS, BEFORE CARRY-IN
DINNER AT JUBILEE SHOW**

Important 2010 Dates to Remember

August 7	Last Chance to Nominate For IPtHA Year End Awards (Must be a Current IPtHA Member and Nominate and Pay Fees Prior to Showing, Points are not Retroactive)
August 7-8	East Central Pinto Jubilee (IPtHA Host) ~ New Castle, IN
September 11-12	Indiana Pinto Hoosier Classic Fall Show ~ New Castle, IN
September 13	Deadline for Submitting Open Horse Show Points
September 25	Poker Ride ~ Salamonie Reservoir
November 1	Reservations Due for Banquet
November 20	2010 Indiana Pinto Awards Banquet & General Membership Meeting Election of Board of Directors & Officers
December 1	Submit Back Number Request Forms for 2011 IPtHA Show Season

Have A Great 2010 Show Season

All 2010 Show Forms are available on-line at: indianapinto.com

All National Forms are available on-line at: <http://www.pinto.org>

INDIANA PINTO CLUB SPONSORS



POKER RIDE

RAIN OR SHINE

WHERE: Salamonie Reservoir at the Lost Bridge West, Horseman's Campground

WHEN: Saturday September 25TH, 2010

Time: 9:00 A.M.

Entry Fee \$10.00 per Horse & Rider

Open to all equine

POT SPLIT 50\50

FOR BEST HAND

Prizes 2nd thru 5th place

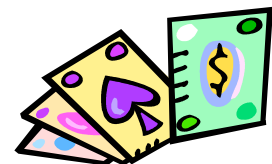
For more information call:

Wes or Teressa Brubaker

206-563-3282

All participants are responsible for their own bridle tags & entrance fees to the Reservoir.

Free will offering for food, all proceeds goes to Indiana Pinto Horse club.



EAST CENTRAL PINTO JUBILEE

August 7 & 8, 2010

Henry County Saddle Club Grounds, 2221 North Memorial Dr, New Castle, Indiana

PHA ROM Approved - 3 Judges Plus Judges' Average *The Average Judge Placing will be available on ePinto when the Show is Posted.

Judge A ~ Rick McMasters, TN

Judge B ~ Duke Neff, MO

Judge C ~ Drew Emnett, OH

Rain or Shine, Covered Arena Available

Classes start at 8:00 am on Saturday and at 7:30 am on Sunday

SATURDAY 8:00 A.M.

1	5 & Under Stallions & Geldings - Stock Type	39	YA Novice Walk/Trot Equitation, Eng/West, 18&Under*	84	Miniature Horse Pleasure Driving, A&B Division
2	6 & Over Stallions & Geldings-Stock Type	40	YA Walk/Trot Equitation English/Western 11 and under*	85	Pony Pleasure Driving
26R	6 & R Stock Type Stallions & Geldings	41	YA Walk/Trot Pleasure English/Western 11 and under*	86	Horse Pleasure Driving
3	AM Horse Halter Stallions & geldings, Stock/Hunter 19 & Over	42	AM Novice Walk/Trot Pleasure, English/Western* 19 & Over	87	AM Pony/Miniature Horse Pleasure Driving 19 & Over
4	Halter Hunter Type All Ages/Sexes	43	AM Novice Walk/Trot Equitation, English/Western* 19 & Over	88	YA Pony/Miniature Horse Pleasure Driving 18 & Under
46R	6 & R Hunter Type	44	Hunter Under Saddle	89	AM Horse Pleasure Driving 19 & Over
5	Amateur Horse Halter Pleasure/Saddle, All Sexes 19 & Over	45	AM Hunter Under Saddle 19 & Over	90	Disciplined Rail Driving, Pony
6	2 & Under Mares - Stock Type	46	YA Hunter Under Saddle 18 & Under	91	Disciplined Rail Driving, Horse
7	3, 4, & 5 Year Old Mares - Stock Type	47	English Pleasure Sr Horse, 6 & Over All Types/Sexes	92	Disciplined Rail Driving, Miniature Horse, A&B Division
8	6 & Over Mares - Stock Type	48	English Pleasure Breeding Stock Horse	93	AM Disciplined Rail Driving 19 & Over
86R	6 & R Stock Type Mares	49	Pony English Pleasure	94	YA Disciplined Rail Driving 18 & Under
9	AM Horse Halter Mares, Stock/Hunter 19 & Over	50	English Pleasure Horse All Types/Ages/Sexes	95	AM Driving Reinsmanship 19 & Over
10	Pleasure/Saddle Type Halter All Sexes & Ages	51	AM Novice English Pleasure* 19 & Over	96	YA Driving Reinsmanship 18 & Under
106R	6 & R Pleasure/Saddle Type Halter	52	IR AM English Pleasure 19-39	97	Obstacle Driving, Horse
11	Breeding Stock Halter, All Ages, All Sexes, All Types	53	SR AM English Pleasure 40-54	98	Obstacle Driving Pony
116R	6 & R Breeding Stock Halter	54	ELITE AM English Pleasure 55+ *	99	Obstacle Driving, Miniature Horse, A&B Division
12	Pony Halter All Types & Ages	55	YA Novice English Pleasure* 18 & Under	100	Ideal Pinto Pleasure Driving, Horse
126R	6 & R Pony Halter	56	YA English Pleasure 13 & under	101	Ideal Pinto Pleasure Driving, Pony
13	Miniature Horse Halter A & B All Ages/Sexes	57	YA English Pleasure 14-18	102	Ideal Pinto Pleasure Driving, Miniature Horse A&B Division
136R	6 & R Miniature Horse Halter A & B Divisions	58	AM Novice English Equitation* 19 & Over	103	AM Ideal Pinto Pleasure Driving 19 & Over
14	AM Novice Showmanship, English/Western* 19 & Over	59	AM Novice English Equitation* 19 & Over	104	YA Ideal Pinto Pleasure Driving 18 & Under
15	AM Pony/Miniature Western Showmanship 19 & Over	60	SR AM English Equitation 40-54		BREAK
16	YA Pony/Miniature Western Showmanship 18 & Under	61	ELITE AM English Equitation 55+ *	105	Western Pleasure Jr. Horse All Types 5 & Under
17	IR AM Western Showmanship Horse 19-39	62	YA Novice English Equitation* 18 & Under	106	Western Pleasure Pleasure/Saddle
18	SR Am Western Showmanship Horse 40-54	63	YA English Equitation 13 & Under	107	Western Pleasure Sr. Horse All Types, 6 & Over
19	ELITE AM Western Showmanship Horse 55+ *	64	YA English Equitation 14-18	108	Pony Western Pleasure
20	YA Novice Showmanship, English/Western* 18 & Under	65	Disciplined Rail English Horse	109	Western Pleasure Stock/Hunter
21	YA Western Showmanship Horse 13 & Under	66	AM Disciplined Rail English 19 & Over	110	AM Novice Western Pleasure* 19 & Over
22	YA Western Showmanship Horse 14-18	67	YA Disciplined Rail English 18 & Under	111	IR AM Western Pleasure 19-39
23	YA Horse Halter, All Types/Ages/Mares/Geldings 18 & Under	68	Ideal Pinto English Horse All Types	112	SR AM Western Pleasure 40-54
24	AM Pony/Miniature Horse Halter, All Ages/Sexes 19 & Over	69	AM Ideal Pinto English 19 & Over	113	ELITE AM Western Pleasure 55+ *
25	YA Pony/Miniature Horse Halter, Mares & Geldings 18 & Under	70	YA Ideal Pinto English 18 & Under	114	Western Pleasure Breeding Stock
26	Overo Color, Horse		SUNDAY 7:30 A.M.	115	YA Novice Western Pleasure* 18 & Under
27	Tobiano Color, Horse	70A	Miniature A&B Hunter over Fences	116	YA Western Pleasure 13 & Under
28	Pony Color, Tobiano/Overo	71	Pony Jumping In Hand	117	YA Western Pleasure 14-18
29	Miniature Horse Color, A&B Division, Tobiano/Overo	72	Miniature Horse Jumping In Hand, A&B Division		BREAK
	BREAK	73	AM Pony/Miniature Horse Jumping In Hand 19 & Over	118	AM Novice Western Horsemanship * 19 & Over
30	IR AM English Showmanship 19-39	74	YA Pony/Miniature Horse Jumping In Hand 18 & Under	119	IR AM Western Horsemanship 19-39
31	SR AM English Showmanship 40-54		BREAK	120	SR AM Western Horsemanship 40-54
32	ELITE AM English Showmanship 55+ *	75	Pony Trail In Hand	121	ELITE AM Western Horsemanship 55+ *
33	YA English Showmanship 13 & Under	76	Miniature Horse Trail In Hand, A&B Division	122	YA Novice Western Horsemanship* 18 & Under
34	YA English Showmanship 14-18	77	AM Pony/Miniature Horse Trail In Hand 19 & Over	123	YA Western Horsemanship 13 & under
	BREAK	78	YA Pony/Miniature Horse Trail In Hand 18 & Under	124	YA Western Horsemanship 14-18
35	Longe Line, All Types, Yearlings	79	Trail Horse	125	Disciplined Rail Western
36	Breeding Stock Yearling Longe Line, All Types	80	Trail Horse Breeding Stock	126	AM Disciplined Rail Western 19 & Over
37	Leadline Equitation 8 & Under*	81	Pony Trail	127	YA Disciplined Rail Western 18 & under
38	YA Novice Walk/Trot Pleasure, Eng/West, 18&Under *	82	AM Trail 19 & Over	128	Ideal Pinto Western Horse All Types
	combined if there are fewer than 5 entries in an age division	83	YA Trail 18 & Under	130	AM Ideal Pinto Western 19 & Over
	By entering this show owners, lessees, and exhibitors agree that PHA, Indiana Pinto, Tri-State Pinto and Western Ohio Pinto, the show committee and grounds will not be held responsible for any loss, injury damage or debts in connection with this show.		BREAK		YA Ideal Pinto Western 18 & under

*NON-ROM Classes - Youth/AM Novice entered in any Walk/Trot Division class may not cross enter Leadline or any class that requires a canter or a lope

Pot Luck Dinner after the Show on Saturday Night - Everyone invited Join the Fun

EAST CENTRAL PINTO JUBILEE
August 7 & 8 2010

JUDGES: A. Rick McMasters, TN B. Duke Neff, MO C. Drew Ennett, OH
Henry County Saddle Club Grounds, New Castle, IN
Show Grounds address: 2221 North Memorial Dr., New Castle, IN 47362

<u>Show Coordinator</u>	<u>Show Secretary/Pre-Entries</u>	<u>Show Manager</u>	<u>Stall Manager</u>	<u>Host Hotel</u>
Nancy Bredemeier 4764 Fairground Rd Atwater, OH 44201 330-325-7506	Barbara Grissom 1056 S Clay Frankfort, IN 46041 765-242-4644 borissom37@yahoo.com	Joe Grissom 1056 S Clay Frankfort, IN 46041 765-242-4644 ioe1056grissom@yahoo.com	Joe Grissom 1056 S Clay Frankfort, IN 46041 765-242-4644	Steve Alford All American Inn 21 Executive Drive New Castle, IN 47362 765-593-1212

CLASS FEES:

Pre-entry fees: \$20.00/class or \$100.00 unlimited classes Deadline date: July 27, 2010
After pre-entry deadline: \$30.00/class or \$150.00 unlimited classes

STALL FEES: No phone reservations. Only one animal/stall. All horses kept on grounds overnight must be stalled.

Pre-entry fees: \$20.00/night or \$30.00/weekend Deadline date: July 27, 2010
After pre-entry deadline: \$25.00/night or \$40.00/weekend

Mail stall reservation forms and fees to Joe or Barbara Grissom at the address listed above.

TRAILER FEE: \$5.00/day trailer fee if showing out of a trailer on a daily basis

OFFICE FEE: \$3.00 per horse per class - showing 4 classes or less,
OR \$15.00 per horse - showing 5 or more classes.

PHA FEE: \$8.00/horse plus \$4.00/class

CAMPING FEE: \$20.00 per night or \$35.00/weekend

OTHER FEES: Returned Check Fee: \$25 per returned check

PRE-ENTRIES: Must include the following to be considered and be postmarked by July 27.

1. PHA master form filled out completely
2. Copy of the results of a Coggins test taken within 12 months of show. (IN law requires that out of state horses travel with health papers)
3. Check made payable to ECPJ ALL FEES TO BE PAID IN U.S. FUNDS ONLY.
4. Pre-entry form. Photocopies (front & back) of all horse registration papers. Current PHA membership card for each listed owner, each listed lessee, and each open, amateur or youth exhibitor. Novice youth and amateur notation must appear on membership card in order to enter novice classes. Family relationship forms and leases must be on file with PHA and a copy must be provided with pre-entry.

ADDED CLASSES AT THE SHOW:

No entries will be accepted until all fees are paid. Post-entry fees will be charged for added classes unless the horse is pre-entered for unlimited classes.

REFUND POLICY:

Full refund will be given for pre-entries if canceled by 9 PM Thursday prior to show. Call Barbara Grissom to cancel.
No refunds will be given after the show begins except for classes that are cancelled. The \$15.00 office fee and \$8.00 PHA/horse fee and the PHA \$4.00 per class fee will not be refunded for cancellations after the show has begun.

ADDITIONAL INFORMATION:

Indiana law requires that owners of animals traveling from other states be able to present show management with copies of a negative Coggins test taken within 12 months and a health certificate issued within 30 days of travel.
Registration papers, PHA membership cards for owners, lessees and all exhibitors, as well as copies of leases and family relationship forms must be presented at the office for entries made at the show.

Rules for this show are those of the current National PHA Rulebook.
Stallions may be shown only by exhibitors 19 years or older.

If classes that cannot be combined have fewer than three entries, they will be run as non-ROM point earning classes. All published class fees will be assessed. Exhibitors choosing to withdraw must do so five classes prior in order to be eligible for a refund.
Open and Y A classes with 3 or more entries will run as listed on the show bill unless combined with a smaller class. AM classes that are divided by age of exhibitor will be combined if there are fewer than 5 entries in a division.

Dog control: Dogs must be on a 6' leash during the day and kept inside at night. Please clean up after your dog in the arena and office area.
There will be a food vendor on the grounds.

TWO-MINUTE GATE RULE: The two-minute class entry time begins when the first horse of the class enters the arena.
NO LEASES CAN BE PURCHASED AT THE SHOW. All amateur and youth exhibitors must own or lease their horse.

Mims & ponies must be measured by show official or produce a current PHA /approved breed measurement card before entering classes.
By entering this show, owners, lessees and exhibitors agree that PHA, Indiana Pinto, Tri-State Pinto, Western Ohio Pinto, the show committee and the show grounds will not be held responsible for any loss, injury, damage or debts in connection with this show.

Sawdust will be available for pre-purchase or at the show office.
On-site registration will be available at the show, register your horse and show at this show, check with the show office.
For entry forms and stall and camping reservation forms contact Joe Grissom: malto:ioe1056grissom@yahoo.com 765-242-4644

Payback in all classes that require an entry fee: 50 cents for each Judge's 1st place and 25 cents for each Judge's 2nd - 6th Place
No Payback for Average Placing

ECPJ will Comp Horse Stall to any Royalty Showing at 2010 ECPJ

2010 EAST CENTRAL PINTO JUBILEE

August 7 & 8 2010

PLEASE PRINT CLEARLY

ENTRIES MUST BE POSTMARKED BY 7/26/2010 TO QUALIFY FOR PRE-ENTRY FEES

Person Responsible for Account: _____ Address: _____ Phone: _____ e-mail: _____ Horses Registered Name: _____	Committee Use Only Back # _____ Total Bill: _____ Amt Paid: _____ Check # _____
---	---

BACK NUMBERS WILL BE ASSIGNED BY THE PRE-ENTRY PERSON AND SHOW OFFICE

Use ONLY weekend fee schedule –or- per class fee schedule	
WEEKEND FEE SCHEDULE:	TOTAL
Weekend Unlimited Classes (Pre-entry \$100)(Post entry \$150) _____	\$ _____
Per class PtHA fee (\$4.00 per class): # classes _____ X \$4 =	\$ _____

PER CLASS FEE SCHEDULE:	
Number of Classes Marked on Entry Form: _____ X (\$20 Pre-Entry)(\$30 Post) =	\$ _____
Per Class PtHA fee (\$4 per class): # classes _____ X \$4 =	\$ _____

PtHA ROM & Processing Fee \$8.00/horse	\$ <u>8.00</u>
OFFICE FEE \$3.00/PER CLASS SHOWING 4 OR LESS CLASSES OR \$15.00 FOR 5 OR MORE CLASSES	\$ _____

Camping Fee \$20/Night or \$35 per weekend	\$ _____
Trailer Fee \$5/horse/day (applies only if showing out of trailer)	\$ _____
If Camping fee was already paid on another sheet provide name of horse: _____	\$ _____

CHECK OR MONEY ORDER SHOULD BE MADE OUT TO ECPJ (Pre-entry checks are not deposited until after the show date)	
TO BE PAID IN US FUNDS ONLY	TOTAL FEES
	\$ _____

SEPARATE CHECK AND PAPERWORK REQUIRED FOR THE FOLLOWING: (if applicable)

PtHA (National) Membership Fee (Annual)	_____
PtHA (National) Amateur Fee (Annual)	_____
PtHA (National) Youth Fee (Annual)	_____

ADDITIONAL PREENTRY MATERIALS

_____ FINAL LEASE FORM, PtHA (if applicable)
_____ FAMILY RELATIONSHIP FORM (if applicable)
_____ COPY OF REGISTRATION PAPERS (Both Sides)
_____ COPY OF MEMBERSHIP CARDS
_____ COPY OF NEGATIVE COGGINS TEST REQUIRED
_____ MASTER ENTRY FORM ONE PER HORSE for any combination of YA, AM and /or Open Classes
_____ CHECK OR MONEY ORDER MADE PAYABLE TO ECPJ (Not deposited until after show)

SEND ALL FORMS AND FEES TO

**Barbara Grissom
1056 S Clay
Frankfort, IN 46041
765-242-4644**

TO QUALIFY FOR PRE-ENTRY FEES YOU MUST ENCLOSE ALL APPLICABLE FORMS, FILLED OUT CORRECTLY.

STALL FORM – EAST CENTRAL PINTO JUBILEE SHOW

AUGUST 7 & 8, 2010

If paying for more than one exhibitor you must list all the exhibitors on the form OR use a separate form for each exhibitor. Every stall that is reserved must be matched to an exhibitor in order to be charged the pre-show fee of \$20.00 per night or \$30.00 for the weekend. After pre-entry deadline, stall fee is \$25 per night or \$40 per weekend. **Make check to ECPJ.**

Stall reservations must be postmarked by **July 28, 2010** in order to receive pre-entry rates.

Refunds will be given if Joe Grissom is notified by August 6, 2010

All horses staying over night **MUST** be stalled.

Sawdust may be prepaid with stalls or purchased from the fairgrounds during limited posted hours only. Prepaid bags will be placed in stalls. Bags are \$7.00 Prepaid \$6.00 picked up at shaving trailer.

Sawdust may be prepaid with stalls or purchased from the fairgrounds during limited posted hours only. Prepaid bags will be placed in stalls. Bags are \$7.00 Prepaid \$6.00 picked up at shaving trailer.

Mail reservation to: Joe Grissom, 1056 S Clay, Frankfort, IN 46041 765-242-4644

[illegible]



2010 Indiana Pinto Hoosier Classic

September 11 & 12
Begins 8:00 AM (local time)

Henry County Saddle Club Grounds
2221 North Memorial Dr., New Castle, IN

Judges: Sid Hutchcraft-FL, Robert Milks-MI, Jennifer Moshier-OH, Robin Miller-OH
Secretary: Barbara Grissom - Show Manager/Stalls: Joe Grissom (765) 242.4644

4 JUDGES - RAIN OR SHINE - COVERED ARENA AVAILABLE

Saturday Classes 8:00 am

1. Halter Stallions/Geldings 2 YR Old & Under ST/HN
2. Halter Stallions/Geldings 3 YR Old & Older ST/HN
GR Grand & Reserve Stallion/Gelding ST/HN
3. AM Halter Stallions/Geldings Horse 19 & Over
4. Halter Mares ST/HN All Ages
Grand & Reserve Mare ST/HN
5. Halter Pleasure/Saddle Type All Ages/Sexes
Grand & Reserve Pleasure /Saddle Type
6. Halter Miniature Horse A & B All Ages/Sexes
Grand & Reserve Miniature Horse
7. Halter Pony All Ages/Types/Sexes
Grand & Reserve Pony
8. AM Halter Mares Horse 19 & Over
9. AM Halter Mini/Pony All Types/Sexes 19 & Over
10. YA Halter Pony All Types/Mares/Geldings 18 & Under
11. YA Halter Mini All Types/Mares/Geldings 18 & Under
12. YA Halter Geldings Horse 18 & Under, All Types
13. YA Halter Mares Horse 18 & Under, All Types
14. Halter Breeding Stock All Types/Sexes/Ages
Grand & Reserve Breeding Stock
15. AM Western Showmanship Horse 19 & Over, All Types
16. AM Western Showmanship Mini/Pony 19 & Over, All Types
17. Novice AM Showmanship, Eng/West, All Types
18. YA Western Showmanship Mini 18 & Under
19. YA Western Showmanship Pony 18 & Under, All Types
20. YA Western Showmanship Horse 14-18, All Types
21. YA Western Showmanship Horse 11-13, All Types
22. YA Western Showmanship Horse 10 & Under, All Types
23. YA Novice Showmanship Western/English, All Types
24. Miniature A & B Tobiano/Overo Color, All Sexes
25. Tobiano/Overo Color Pony, All Types, All Sexes
26. Overo Color Horse, All Types, All Sexes
27. Tobiano Color Horse, All Types, All Sexes
Break
28. AM English Showmanship Horse 19 & Over, All Types
29. AM English Showmanship Mini/Pony 19 & Over, All Types
30. YA English Showmanship Mini 18 & Under
31. YA English Showmanship Pony 18 & Under, All Types
32. YA English Showmanship Horse 14-18, All Types
33. YA English Showmanship Horse 11-13, All Types
34. YA English Showmanship Horse 10 & Under, All Types
Break
35. YA Leadline 8 & Under, Free, non-pointed
36. Yearling Longe Line, All Types
37. Breeding Stock Yearling Longe Line, All Types
38. Pony English Pleasure HN/SD Seat, All Types

39. Breeding Stock English Pleasure HN/SD Seat
40. AM Hunter Under Saddle 19 & Over, All Types
41. YA Hunter Under Saddle 18 & Under, All Types
42. Hunter Under Saddle Horse All Types
43. English Pleasure Jr Horse 5 & Under HN/SD Seat, All Types
44. AM English Pleasure 19 & Over HN/SD Seat, All Types
45. YA English Pleasure 18 & Under HN/SD Seat, All Types
46. Hunt Seat English Pleasure, ST/HN Types
47. English Pleasure Sr Horse 6 & Over HN/SD Seat, All Types
48. AM English Equitation 19 & Over HN/SD Seat, All Types
49. YA English Equitation 18 & Under HN/SD Seat, All Types
50. AM Disciplined Rail English 19 & Over HN/SD Seat, All Type
51. YA Disciplined Rail English 18 & Under HN/SD Seat, All Typ
52. Disciplined Rail English HN/SD Seat, All Types
53. English Pleasure PL/SD Type HN/SD Seat
54. AM Ideal Pinto English 19 & Over, All Types
55. YA Ideal Pinto English 18 & Under, All Types
56. Ideal Pinto English HN/SD Seat, All Types

Break

57. Mini Pleasure Driving A & B
58. Pony Pleasure Driving
59. AM Pleasure Driving Mini/Pony 19 & Over
60. YA Pleasure Driving 18 & Under
61. Pony Ideal Pinto Driving , All Types
62. Miniature Ideal Pinto Driving A & B
63. AM Flag Race 19 & Over, All Types
64. YA Flag Race 18 & Under, All Types
65. Open Flags Horse, All Types
66. AM Barrels 19 & Over, All Types
67. YA Barrel Racing 18 & Under, All Types
68. Open Barrel Racing Horse, All Types
69. Barrel Racing Breeding Stock, All Types
70. AM Pole Bending 19 & Over, All Types
71. YA Pole Bending 18 & Under, All Types
72. Open Pole Bending Horse, All Types
73. AM Keyhole Race 19 & Over, All Types
74. YA Keyhole Race 18 & Under, All Types
75. Open Keyhole Race Horse, All Types

PtHA ROM APPROVED

**Help Support our Club by Sponsoring a Class
for \$10.00! (Fill out a form at the office.)**

**Pattern Books are available at the show office
and can also be found online @
www.indianapinto.com**



2010 Indiana Pinto Hoosier Classic

September 11 & 12
Begins 8:00 AM (local time)

Henry County Saddle Club Grounds
2221 North Memorial Dr., New Castle, IN

Judges: Sid Hutchcraft-FL, Robert Milks-MI, Jennifer Moshier-OH, Robin Miller-OH
Secretary: Barbara Grissom - Show Manager/Stalls: Joe Grissom (765) 242.4644

4 JUDGES - RAIN OR SHINE - COVERED ARENA AVAILABLE

Sunday Classes 8:00 am

76. AM Jumping in Hand Mini/Pony 19 & Over
77. YA Jumping in Hand Mini/Pony 18 & Under
78. Pony Jumping in Hand, All Types
79. Jumping in Hand Mini A & B
80. Pony Trail in Hand, All Types
81. AM Trail in Hand Mini/Pony 19 & Over
82. YA Trail in Hand Mini/Pony 18 & Under
83. Mini Trail in Hand A&B
84. AM Trail Eng/West 19 & Over, All Types
85. YA Trail Eng/West 14-18, All Types
86. YA Trail Eng/West 13 & Under, All Types
87. Trail Horse Eng/West All Types
88. Pony Trail Eng/West All Types
89. Trail Breeding Stock Eng/West All Types
90. Pleasure Driving Horse All Types
91. AM Pleasure Driving 19 & Over, All Types
92. AM Disciplined Rail Driving 19 & Over, All Types
93. Ideal Pinto Driving Horse, All Types

Break

94. YA Walk/Trot Pleasure Eng/West 11 & Under FREE**
95. YA Walk/Trot Equitation Eng/West 11 & Under FREE**
96. Open Walk-Trot Non-Pointed \$2.00 (Fun Class Open to All)
97. Adult Walk Trot, Pleasure Non-Pointed \$2.00 Entry
(CI's 97 & 98 adults only-may not enter any canter class)
98. Adult Walk Trot Equitation E/W Non-Pointed \$2.00 Entry
99. 2 & 3 Yr Old Snaffle Bit Western Pleasure, All Types
100. Breeding Stock 2 & 3 Yr Old Snaffle Bit W P, All Types
101. Breeding Stock Western Pleasure, All Types
102. Western Pleasure Jr Horse 5 & Under All Types
103. Novice AM Western Pleasure 19 & Over All Types
104. AM Western Pleasure 19 & Over All Types, All Types
105. YA Western Pleasure 14-18 All Types
106. YA Western Pleasure 13 & Under, All Types
107. Western Pleasure Sr Horse 6 & Over All Types
108. Pony Western Pleasure All Types
109. Western Pleasure PL/SD Types
110. Western Pleasure ST/HN Types
111. AM Western Horsemanship 19 & Over, All Types
112. YA Western Horsemanship 14-18, All Types
113. YA Western Horsemanship 13 & Under, All Types
114. AM Disciplined Rail Western 19 & over, All Types
115. YA Disciplined Rail Western 14-18, All Types
116. YA Disciplined Rail Western 13 & Under, All Types
117. Disciplined Rail Western Horse, All Types
118. AM Ideal Pinto Western 19 & Over, All Types
119. YA Ideal Pinto Western 14-18, All Types
120. YA Ideal Pinto Western 13 & Under, All Types
121. Ideal Pinto Western Horse, All Types

Show Fees:

ROM Fee:	\$5.00/Horse/Judge
Office Fee:	\$10.00/Horse
Stalls:	\$30.00/Show
Stalls:	\$20.00 Night
Showing From Trailer:	\$5.00/Day
Camping Fee:	\$35.00/Weekend
Camping Fee:	\$20.00/Night
Class Rate (at show):	\$7.00/Class/Judge
Flat Fee (at show):	\$35.00/Horse/Judge
Pre-Entry Class Rate:	\$5.00/Class/Judge
Pre-Entry Flat Fee:	\$25.00/Horse/Judge
Additional PtHA Fee:	\$1.00/Horse/Class

****Pre-Entries must be postmarked 10 days prior to show date and must be on approved forms.****

There will be a \$25.00 returned check fee!
All dogs must be on a leash at the show grounds.
NO STRAW ALLOWED IN STALLS!
Shavings Available

All owners must be national Pinto members. Membership cards must be shown to be eligible for open, youth, and AM classes. All Entries must be registered with PtHA and proof of registration will be required at the show. All current regular PtHA rules and fees apply. ****YA Walk/Trot classes are non-pointed+ YA Walk/Trot entries may not show in any other riding class. No Refunds once show has started, unless class has less than 3 entries, the exhibitor may withdraw and receive a refund.**
The show committee reserves the right to combine or cancel any class. Halter classes will be combined by type first, then sex. Entry into the show constitutes an agreement that the IPtHA and the PtHA will not be held responsible for any loss, theft, or injury occurring at this show.

Join the IPtHA Family for the Saturday Night Pot Luck Dinner and Meeting. Everyone is encouraged to join in the fun and bring a dish to share! Please Bring Your Own Beverage

**Host Hotel: Steve Alford All-American Inn
21 East Executive Dr, New Castle, IN
765-593-1212**

Out of State Royalty - IPtHA will comp your Horse Stall if Showing

All out of state Equine must have current coggins (within 12 months) and health papers (within 30 days) to turn in at the show office per Indiana state law.

IPtHA 2010 PRE-REGISTRATION FORM

****This form must be postmarked 10 days prior to the date of the show****

YOU MUST PICK UP YOUR CONFIRMATION SHEET AT THE SHOW OFFICE BEFORE YOU SHOW IN ANY CLASS

Back #

IPtHA Reserved Number or request a number.
Numbers are assigned as they are received.

Owner Name: _____ Phone: _____
Address: _____ City, State, Zip: _____
Horse Name: _____ Email Address: _____

- A. Have you enclosed: (**copies only** – not originals)
- Registration Papers – (both Sides, showing current Owner)
 - Owner and/or Exhibitors current years PtHA membership card (Open, YA, AM)
 - Current year lease information (You cannot purchase lease at the show)
 - Current year Coggins test results
(Indiana Law requires all out of state horses, entering the state of Indiana, to have with them a Negative Coggins Test, dated within the last 12 months and a Current Health Certificate, dated within 30 days)

- B. Registering for: (**Circle** only **One** show, **One** horse per form)
- May 15-16** - Spring Show **Sept 11-12**
(4 Judges) (4 Judges)

- C. Master Entry Form – Use the PtHA Master Entry Form. One Entry Form per Horse.

D. Payment

1. Entry Fee:
- Pre- Registration Fee (\$5.00/class/judge): _____ classes X \$5.00 X 4 Judges \$ _____
- Pre- Registration Economy Rate (\$25.00/Judge): \$25.00 X 4 Judges = \$100.00 \$ _____
2. Office Fee (\$10.00/horse) \$10.00 \$ 10.00
3. ROM Fee (\$5.00/judge) \$5.00 X 4 Judges \$ 20.00
4. Camping Fee (\$35.00/weekend or \$20.00 Per Night) \$ _____
5. Showing from Trailer (\$5.00/day) \$5.00 X _____ Days \$ _____
6. Additional PtHA Fee ((\$1.00/class) \$1.00 X _____ Classes \$ _____
7. Stalls: # _____ Stalls X \$30.00 Day Stalls: Fri _____ Sat _____ X \$20.00 \$ _____
8. Please indicate how many stalls even if you pre-paid for your stalls. If pre-paid mark here _____
9. Misc. Fees: Shavings \$7 @Stall \$6 @Trailer _____ Bags= \$ _____ Pattern Book(s) \$ _____ \$ _____
10. Classes 96,97,98 (may not enter under Economy Fee) @\$2 Each _____ \$ _____
- (Make check payable to **IPtHA**) **TOTAL** \$ _____

IPtHA Membership (Include IPtHA Membership Form. Rates are on form). Requires a separate check payable to **IPtHA Membership** \$ _____

PtHA Membership Include PtHA Membership form. Requires separate check payable to **PtHA** \$ _____

Mail to: Joe Grissom, 1056 South Clay St., Frankfort, IN 46041-3137 (765) 242-4644.

By the act of entering this show, Owners, Lessees, and Exhibitors agree that PtHA, IPtHA, the Show Grounds, and the Show Committee will not be held responsible for any loss, injury, damage, or debts in connection with this show.

Adult Signature (Parent or Guardian, if Owner, Lessee, or Exhibitor is under 19) **Date**

For Office Use Only

Back # _____ \$ _____ Amount Paid \$ _____ Cash

Back # _____ \$ _____ Check # _____

TOTAL \$ _____

Revised 9/28/2009 JEG

All Exhibitors showing Same Horse must use Same BackNumber.

BACK #

PtHA MASTER ENTRY FORM

DAY SHOWING
SUN OTHER

Clear Selections

INCOMPLETE ENTRY FORMS MAY RESULT IN LOSS OF PtHA POINTS

Name of Show _____ Date of Show _____

CIRCLE TYPE OF MEMBERSHIP: ☐ Individual ☐ Leasee ☐ Partnership ☐ Corporate

Owner ID# _____ Name 1 _____ Name 2 _____

Address _____ City _____ State _____ Zip _____

Phone (_____) _____

Horse Name _____ Registration # _____ Foaling Date _____

CIRCLE ONE IN EACH BOX: ☐ Horse ☐ Pony ☐ Miniature ☐ Mare ☐ Stallion ☐ Gelding ☐ Overo ☐ Tobiano ☐ Stock ☐ Hunter ☐ Pleasure ☐ Saddle

*****SEE SHOWBILL FOR CLASS NUMBERS TO FILL OUT INFORMATION BELOW*****

A M A T E U R	AM Exhibitor Name _____ PtHA# _____													
	Address _____ City _____ State _____ Zip _____													
	Relationship to owner _____ Date of birth _____ E-Mail address _____													
	Amateur Class #													
	Amateur Class #													
	Novice Class #													
	Scratched class #													
Y O U T H	YA Exhibitor Name _____ PtHA# _____													
	Address _____ City _____ State _____ Zip _____													
	Relationship to Owner _____ Date of birth _____ E-Mail address _____													
	Youth Class #													
	Youth Class #													
	Novice Class #													
	Scratched class #													
O P E N	#1 Open Exhibitor's Name _____ PtHA # _____													
	Open Class #													
	Open Class #													
	Scratched Class #													
	#2 Open Exhibitor's Name _____ PtHA # _____													
	Open Class #													
	Open Class #													
	Scratched Class #													

By the act of entering this show, Owners, Lessees and Exhibitors agree that PtHA, IPtHA, the show grounds and the show committee will not be held responsible for any loss, injury, damage, or debts in connection with this show. This horse has tested negative for EIA during this calendar year.

Signature of Owner or Exhibitor/Rider/Agent - **MUST BE AN ADULT**

IPtHA 2010 SHOW PRE-ENTRY GUIDELINES

1. We will handle the pre-entries for the 2010 East Central Pinto Jubilee Show. (Use ECPJ Forms)
2. Checks are deposited after the show weekend.
3. Entries with missing information and paperwork may not be registered at the pre-registration reduced fee.
4. PtHA requires master entry forms to be filled out completely. If there are 2 or 3 places on the form that require the same information, you must fill it out in every place. If you own the horse, your name and address will be on the form twice.
5. Pre-registration must be postmarked **10 DAYS PRIOR** to the date of the show.
6. All handwriting must be clear, recommend printing. We will not "decode" words or numbers. If we cannot read the form, **NO REDUCED FEE.**
7. Conditional registrations will be accepted until your national paperwork is received. Once you receive your registration papers of membership cards, you are to send a copy for the IPtHA records.
8. **On master entry form list only AM classes in AM section, only YA classes in YA section and only Open classes in the Open section.**
9. **Horses registered in multiple names require a current Joint PtHA membership card and each exhibitor must have a current Individual PtHA membership.**
10. **PtHA Rules require you to present a current PtHA Membership card or purchase one prior to showing.**

Pre-registering makes everything run smoother, as well as saves you money. The checks sent in with the pre-registration will be deposited after the show. **Read each area carefully**, and make sure everything is filled out properly. Entries not filled out **completely** may not be able to register at the pre-entry savings fee.

Entries must be **postmarked 10 days prior** to the show date. Also, you must check in at the show office **before** you enter any classes and pick up verification form. Adults must be available at time of check in to take care of any problems with the paperwork. If you have not checked in, we will assume you were a "no show".

Money will be refunded, if notified by the Thursday before the show by calling Joe Grissom 765-242-4644

Back Numbers – Please use your IPtHA permanent back number. If you do not have one, please put a preferred back number on your form. Duplicate back number requests will be assigned in the order they are received.

Signature – The form will **NOT** be considered without an **ADULT** signature.

Payment – Please see IPtHA Pre-Registration Form for all applicable fees.

All of the following must be enclosed or you will not be considered a "pre-entry". You will be required to register at the regular registration fee for the show. NO EXCEPTIONS !!

- | | |
|------------------------------|---|
| A. Registration Papers: | We must receive a copy (NOT original) of all registration papers (both front and back). |
| B. National Membership Card: | All owners of the horse, rider, lessee, lessor must submit a copy of their current national membership cards. PtHA cards must note if riders are an Amateur (AM) or Novice (NOV) in order to be entered in those type of classes. |
| C. Lease Information: | (If applicable) All leases must be for the current year and a copy on file with IPtHA – for the FIRST time you pre-enter only. After that, if there are no changes, you will not need send papers or cards with pre-entries. Leases must be completed with PtHA prior to showing. They can no longer be purchased at the shows. |
| D. Master Entry Form: | Use the PtHA Master Entry form. All fields must be filled in. |
| E. Fee Summary Sheet: | Use the IPtHA fee Summary Sheet |
| F. Membership Forms: | If applicable, pay IPtHA and PtHA with separate checks. |
| G. Total Payment: | Check made payable to IPtHA for everything except PtHA Memberships. |

SEND IN ONE PRE-REGISTRATION FOR EACH HORSE, FOR EACH SHOW.

Please mail pre-entries to:

Joe Grissom, 1056 S. Clay St., Frankfort, IN 46041
765-242-4644

Revised 12/17/2009 JEG



Indiana Pinto Horse Association 2010 Stall Reservation Form

STALL RESERVATION – SPRING SHOW

May 15/16, 2010

of Horse Stalls _____ # of Mares _____ # of Geldings _____ # of Stallions _____ # of Tack Stalls _____

Total # of Stalls _____ @ \$30 each = \$ _____

Day Stalls _____ @ \$20 each = \$ _____ Fri Night _____ Sat Night _____

Shavings Delivered to Stall Pre-Arrival _____ @ \$7 each = \$ _____

Total \$ _____ Make check payable to IPtHA

Name of Person Paying Show Bill _____

Group/Barn you want to be stalled with _____

For questions contact:

Joe Grissom at (765) 242-4644.

<mailto:joe1056grissom@yahoo.com>

Mail this form and check to:

Joe Grissom

1056 S Clay St

Frankfort IN 46041

STALL RESERVATION – FALL SHOW SEPTEMBER 11/12 , 2010

of Horse Stalls _____ # of Mares _____ # of Geldings _____ # of Stallions _____ # of Tack Stalls _____

Total # of Stalls _____ @ \$30 each = \$ _____

Day Stalls _____ @ \$20 each = \$ _____ Fri Night _____ Sat Night _____

Shavings Delivered to Stall Pre-Arrival _____ @ \$7 each = \$ _____

Total \$ _____ Make check payable to IPtHA

Name of Person Paying Show Bill _____

Group/Barn you want to be stalled with _____

For questions contact:

Joe Grissom at (765) 242-4644.

<mailto:joe1056grissom@yahoo.com>

Mail this form and check to:

Joe Grissom

1056 S Clay St

Frankfort IN 46041

INDIANA PINTO HORSE ASSOCIATION

2010 Membership Form Effective 1/01/2010 ~ 12/31/2010

Type of Membership:

☐ Family: \$25.00

☐ Single: \$20.00

☐ Youth: \$10.00

Date: _____ Phone: (____) _____

Name: _____

Farm Name: _____

Spouse: _____

Address: _____ City: _____ State _____ Zip: _____

Email Address: _____

If Family Membership, Please list children 18 yrs and younger:

Name: _____ DOB _____ PtHA #: _____

Name: _____ DOB _____ PtHA #: _____

Name: _____ DOB _____ PtHA #: _____

WOULD YOU LIKE TO BE A SHOW SPONSOR?

"Gold" Sponsor: \$100.00 & Up
"Bronze" Sponsor: \$25.00-\$49.99

"Silver" Sponsor: \$50.00-\$99.99
"Blue Ribbon" Sponsor: 24.99 & Under

I want to be a sponsor! Amount: _____

Est. 1965
Make all Checks payable to: Indiana Pinto Horse Association

Mail to:
Bobbieann Lawrence
2285 E 400 S
Columbia City, IN 46725

☐ I would like to receive the Banner via e-mail
email address _____

Date Received: _____ Check Number: _____ New: _____ Renewal: _____

All Exhibitors showing Same Horse must use Same BackNumber.

BACK #

PtHA MASTER ENTRY FORM

DAY SHOWING
SUN OTHER

Clear Selections

INCOMPLETE ENTRY FORMS MAY RESULT IN LOSS OF PtHA POINTS

Name of Show _____ Date of Show _____

CIRCLE TYPE OF MEMBERSHIP: ☐ Individual ☐ Leasee ☐ Partnership ☐ Corporate

Owner ID# _____ Name 1 _____ Name 2 _____

Address _____ City _____ State _____ Zip _____

Phone (_____) _____

Horse Name _____ Registration # _____ Foaling Date _____

CIRCLE ONE IN EACH BOX: ☐ Horse ☐ Pony ☐ Miniature ☐ Mare ☐ Stallion ☐ Gelding ☐ Overo ☐ Tobiano ☐ Stock ☐ Hunter ☐ Pleasure ☐ Saddle

*****SEE SHOWBILL FOR CLASS NUMBERS TO FILL OUT INFORMATION BELOW*****

A M A T E U R	AM Exhibitor Name _____ PtHA# _____													
	Address _____ City _____ State _____ Zip _____													
	Relationship to owner _____ Date of birth _____ E-Mail address _____													
	Amateur Class #													
	Amateur Class #													
	Novice Class #													
	Scratched class #													
Y O U T H	YA Exhibitor Name _____ PtHA# _____													
	Address _____ City _____ State _____ Zip _____													
	Relationship to Owner _____ Date of birth _____ E-Mail address _____													
	Youth Class #													
	Youth Class #													
	Novice Class #													
	Scratched class #													
O P E N	#1 Open Exhibitor's Name _____ PtHA # _____													
	Open Class #													
	Open Class #													
	Scratched Class #													
	#2 Open Exhibitor's Name _____ PtHA # _____													
	Open Class #													
	Open Class #													
	Scratched Class #													

By the act of entering this show, Owners, Lessees and Exhibitors agree that PtHA, IPtHA, the show grounds and the show committee will not be held responsible for any loss, injury, damage, or debts in connection with this show. This horse has tested negative for EIA during this calendar year.

Signature of Owner or Exhibitor/Rider/Agent - **MUST BE AN ADULT**

2010 IPtHA High Point Rules

1. You must be a current 2010 member of IPtHA at the time of nomination, no later than August 1, 2010. Points will count after dues are paid. Under no circumstances will points be made retroactive.
2. Horse and/or Pony/Miniatures must be registered in the Pinto Horse Association. All leased horses and/or pony/mini must have a copy of the lease on file with the High Point Chairman. The person leasing the horse/pony/mini must be an IPtHA member.
3. Only IPtHA approved shows will count toward IPtHA High Point Awards. IPtHA approval must come from the IPtHA President. The shows approved for 2010 are: **Spring Show at Rochester, May 15-16 (4 judges), EC Jubilee Show at New Castle, August 7-8, (3 judges, plus average card and Fall Hoosier Classic show at New Castle, September 11-12 (4 judges).**
4. Ties for awards will be broken by the horse/pony/mini or rider/driver with the most firsts, then seconds, then thirds, etc., then most classes shown.
5. You must show under at least 7 different judges from the above IPtHA show list to qualify for an IPtHA Year End Award.
6. Walk/Trot and Lead Line classes will award points to the rider only. Children/Adults riding in these classes cannot show in any canter classes or the points in these classes will not count.
7. Transferred horse will retain all accrued points to date of sale. Points do not transfer to the new owner.
8. **Open Show Point Award:** Open Show classes, 4-H shows and Pinto classes in Open Shows, not PtHA approved will count only toward Open Show High Point Award. A show bill signed by the Show Secretary, giving the number of entries in the class and your placing in the class, must be submitted to the High Point Chairman within 15 days after the show. Open Shows must have the entry fee and a qualified judge in order for points to count. Open classes are those in which your horse is shown as a registered Pinto in competition with other breeds. Pinto classes at Open Shows are considered open classes. Registered Paint, Half Arabian and Shetland classes do not count toward this award. Points for this award will begin counting January 1 of the current year and end September 12 of the same year. Points for this award will not count for Overall High Point Awards. Only Open Shows in Indiana will count for this award. You must show under at least 7 different Judges at IPtHA Shows to be eligible for the Open Show High Point Award.
9. A Year End Award will not be given unless the class offered at all IPtHA shows listed above.
10. Any horse changing types will lose all previously acquired points. Altered stallions will retain their type halter points.
11. NO extra points for Grand or Reserve Champion winners will be awarded.

12. **POINTS FOR HIGH POINT AWARDS WILL BE GIVEN AS FOLLOWS:**

# of entries	6+	5	4	3	2	1
First Place	6	5	4	3	2	1
Second Place	5	4	3	2	1	
Third Place	4	3	2	1		
Fourth Place	3	2	1			
Fifth Place	2	1				
Sixth Place	1					

13. You must have five (5) halter points or five (5) showmanship points (AM or YA) plus five (5) performance points to qualify for the Overall High Point Award. Exceptions: Pony/Mini must have a total of five (5) points in any combination.
14. Classes listed on the official IPtHA show bill will be the only classes counted for IPtHA Overall High Point Awards.
15. Show Secretary will send a copy of all show results to the IPtHA Web Master to be posted on line and a copy will be sent to the High Point Chairman for those records.
16. Members should check the record. Any mistakes must be reported by September 20, 2010 to the Show Secretary or the points will stand as posted.
17. Any mistakes, typographical or otherwise, not corrected by the owner will stand as posted on the web site. Nominated Members without web access may request a copy of the show results for the classes they exhibited in.

Overall High Point Awards:

Grand and Reserve Champion Award

Youth 13 & Under, Youth 14-18, Amateur 19 & Over, Mini, Pony, Jr. Western Performance, Jr. English Performance, Sr. Western Performance, Sr. English Performance, Overall Jr. Horse/Pony/Mini, Overall Sr. Horse/Pony/Mini.

Classes Counting for High Point Western Performance for each age division:

Western Pleasure Jr./Sr. Horse, Ideal Pinto Western, Western Pleasure Stock/Hunter, Western Pleasure Pleasure/Saddle Type, Disciplined Rail Western and Trail.

Classes Counting for High Point English Performance for each age division:

English Pleasure Jr./Sr. Horse, Ideal Pinto English, English Pleasure Hunt Seat, English Pleasure Saddle Seat, Disciplined Rail English and Hunter Under Saddle.



Indiana Pinto Horse Association 2010 Year-End Awards Nomination Form



Use a separate form for each horse/pony/miniature. All fees must be paid before points will count. In addition, the owner and all exhibitors MUST BE MEMBERS of IPtHA at time of nomination. Must also show under 7 judges at the Indiana Pinto shows to be eligible for IPtHA and/or Open Show High Point Awards.

Horse Name _____ Registration #: _____ Foaling Date: _____

(Circle One)			(Circle One)			(Circle One)		(Circle One)			
Horse	Pony	Miniature	Mare	Stallion	Gelding	Overo	Tobiano	Stock	Hunter	Pleasure	Saddle

Owner PtHA#/Lease ID #: _____ Owner/Lessee Name: _____ Phone: (____) _____

Address: _____ City: _____ State: _____ Zip Code: _____

OPEN _____ (Mark with 'X')

AMATEUR _____ (Mark with 'X')

Name: _____	Birth date: _____	PtHA #: _____	(Circle One) IPtHA Member: <u>Y</u> <u>N</u>
Name: _____	Birth date: _____	PtHA #: _____	IPtHA Member: <u>Y</u> <u>N</u>
Name: _____	Birth date: _____	PtHA #: _____	IPtHA Member: <u>Y</u> <u>N</u>
Name: _____	Birth date: _____	PtHA #: _____	IPtHA Member: <u>Y</u> <u>N</u>
Name: _____	Birth date: _____	PtHA #: _____	IPtHA Member: <u>Y</u> <u>N</u>

YOUTH _____ (Mark with 'X')

Name: _____	Birth date: _____	PtHA #: _____	(Circle One) IPtHA Member: <u>Y</u> <u>N</u>
Name: _____	Birth date: _____	PtHA #: _____	IPtHA Member: <u>Y</u> <u>N</u>
Name: _____	Birth date: _____	PtHA #: _____	IPtHA Member: <u>Y</u> <u>N</u>
Name: _____	Birth date: _____	PtHA #: _____	IPtHA Member: <u>Y</u> <u>N</u>
Name: _____	Birth date: _____	PtHA #: _____	IPtHA Member: <u>Y</u> <u>N</u>

Please consult the year-end awards program rules for detailed information about qualifying shows, general rules and information about what classes count toward each division.

FEES

Amateur	\$10.00 per horse/exhibitor combination
Youth	\$10.00 per horse/exhibitor combination
Open	\$10.00 per horse (free if applying for Amateur or Youth Awards)

AMOUNT ENCLOSED \$ _____ FOR PAYMENT

Please make checks payable to IPtHA and send with this nomination form to:

Bobbieann Lawrence, IPtHA Treasurer
ATTN: Year End High Point Nomination
2285 East 400 South
Columbia City, IN 46725
260-244-3997

For Point Information Contact:
Wyneta Duncan
2785 E 350 South
Greenfield, IN 46140
317-462-9224
pintoyouth@aol.com

GOLDEN ROYAL SADDLERY INC,

“HEADQUARTERS FOR ALL YOUR EQUESTRIAN
NEEDS”

Located at 12603 Southeastern Ave.

I-74 at Pleasant View Exit

Indianapolis, IN 46259

Contact Annette Pitcher (317) 862-3070 Fax (317) 862-3309

E-Mail Annette@goldenroyal.com

